



Mobile Viewpoint

WMT PLAYOUT



“Receive WMT feeds on any location!”

The WMT™ Payout makes it possible to receive live video from any WMT™ using broadband internet networks.

Wireless Multiplex Terminal™ Payout

The WMT™ Payout connects to the internet with just a single Ethernet connection. When the correct ports are forwarded in the firewall the signals of a WMT™ will come in and turned into 1 video signal. This video signal will exit the WMT™ Payout through a SDI video connection with embedded audio. The payout is available in 3 models:

- Single HD/SD sdi output in combination with balanced audio, SVHS, composite, component and SD SDI (down converted in case of HD input) video output
- Dual HD/SD sdi output
- Quad HD/SD sdi output

Key Features

1, 2 or 4 outputs depending on the model. The WMT™ Payout features the following outputs:

- SD- or HD-SDI video with embedded audio (depending on the transmission coming from the WMT™)
- 2nd SD-SDI output with embedded audio (if transmitting in HD this output will automatically down convert to SD)*
- Composite video out*
- Balanced analog audio out*
- HDMI out*

Inputs

- IFB input (for audio return to the WMT™) switchable
- microphone or line input
- Ref input
- IFB or return audio at less than a second delay
- Ethernet for connection to the internet

** Single output only*

Mobile Viewpoint (MVP) realizes complete solutions for live wireless video and data transmission. MVP offers high-end solutions for IP connectivity regardless of your location (land/air), using multiplexed 3G and 4G mobile networks. By bundling multiple mobile networks we create more and stable bandwidth. Mobile Viewpoint is based in the Netherlands, operates worldwide and has proven track record in media, engineering and governmental organizations.

Mobile Viewpoint B.V.
Keesomstraat 10E
1821 BS Alkmaar
The Netherlands
Sales: + 31 (0)72 7000502
Support: + 31 (0)72 7000501
Fax: +31 (0)72 5129520
sales@mobileviewpoint.com
www.mobileviewpoint.nl

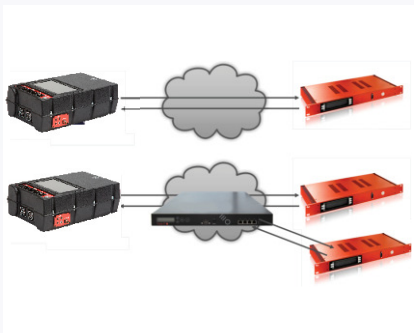


WMT PLAYOUT >



WMT PLAYOUT

“You control, you produce and you own your material”



POINT TO POINT & MULTIPOINT SETUP

- The WMT™-HD solution consists of 2 or 3 elements depending on your requirements.
- The system can be configured in a Point to Point set-up or with a backend server and play out solution. The backend Server solution can accommodate the transmissions of up to 20 different WMT™ Clients and connect to multiple play outs.

Usage Scenarios

- The WMT™ can be used by:
- Broadcast industry
 - Police and Rescue services
 - Military and Security firms

WMT Playout Specs

OUTPUT INTERFACES

- 1, 2 or 4 SD-/HD-SDI output with embedded audio
- SD-SDI extra (down converted if HD is received)*
- Analog composite video*
- S-video*
- Balanced analog audio*
- HDMI*

*single output only

INPUT INTERFACES

- Ethernet 10/100/1000 base-t
- IFB input selectable microphone or line level
- Ref Video
- Ethernet 10/100/1000 base-t for connection

Key features

- Local and remote (web-based) management
- IFB or return audio at less than a second

DECODING

- H.264 main and high profile MVP codec
- Framerate 50, 60, 59,94

SUPPORTED AUDIO ENCODING

- AAC 96/128 kHz LD

IP MANAGEMENT NETWORK INTERFACE

- 10/100/1000 base-T

HARDWARE

- Dedicated appliance 90-240 volt
- Weighs approximately 2,1 kilograms
- 1U 19" rackmount
- Power consumption average 80 watt

NETHERLANDS OFFICE (HEAD OFFICE)

Mobile Viewpoint B.V.
 Keesomstraat 10E
 1821 BS Alkmaar
 The Netherlands

Phone: +31 (0)727000502
 Fax: +31 (0)72 5129520
 info@mobileviewpoint.com
 www.mobileviewpoint.com

INDIA OFFICE

#102 Building 19 Sagar Plaza
 Laxmi Nagar
 District Centre, Delhi
 India

THAILAND OFFICE

75 Ocean Tower II, 29th Floor
 Unit 70-71, Sukhumvit Soi 19
 Klongtoey, Bangkok
 Thailand

DUBAI OFFICE

Mazaya Business Ave.
 AA1 Tower, 26th Floor
 Jumeirah Lake Towers
 Dubai, UAE